

滚珠丝杠支架组件篇 Ball Screw Support Units

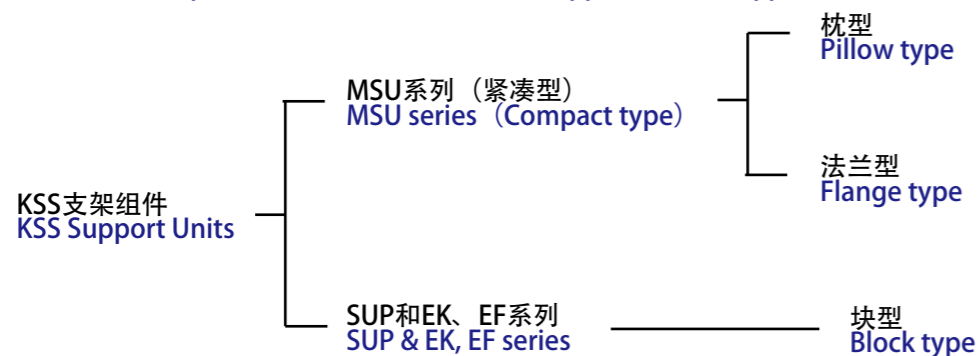
序言 Outline

KSS推出了最适合微型滚珠丝杠轴端的支架组件系列产品。特别是MSU系列(紧凑型),在以往的支架组件的基础上大幅度减轻了重量,实现了小型化。所有产品均设计为可以安装到KSS滚珠丝杠的标准形状轴端上。请务必与滚珠丝杠配合使用。

KSS provides the customer with suitable Support Units for end journal of Miniature Ball Screws. Especially, MSU series, which is called Compact type, has feature of light weight & compact compared to existing series. All of our Support Units fit the standard end journal profile of KSS Ball Screws. Please try and use them as well as Ball Screws.

●系列与分类 / Series classification

各系列均具备固定侧组件和支撑侧组件。
Each series can provide both of fixed-side and supported-side Support Units.



[MSU系列 / MSU Series]

与以往产品相比,重量减轻50%以上

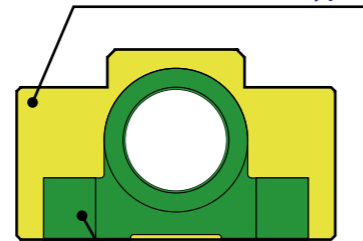
Light weight (more than 50% down)

与本公司产品相比 / Comparison to our current model



紧凑型支架组件 Compact Support Units

以往产品 / Current type



紧凑型支架
Compact Support Units

在以往支架组件的基础上最大限度地减小外形尺寸,实现了轻量小型化,最适合于微型滚珠丝杠。

This type of Support Unit has features of light-weight & compact profile compared to our conventional Support Units. KSS believes this type is suitable for Miniature Ball Screws.

●特点

- 去除了以往产品中累赘的部分,最大限度缩小了安装孔距,重量更轻,外形更紧凑。
- 安装有进行了预压管理的微型角接触球轴承,确保了轴向的高刚性。
- 角接触球轴承采用双封闭型,防尘性能佳,零件数量少,大大降低了成本。
- 轴承采用不锈钢材质,封入有低起尘润滑脂,也可在无粉尘环境中使用
- 系列中新增加超小尺寸(f3)产品,推出超小型滚珠丝杠的支架组件
- 将枕型和法兰型两种(固定侧、支撑侧)产品标准化,扩大了用户的选择范围

●Features

- By eliminating extra shape of Housing, and minimizing pitch of mounting holes, light-weight & compact design Support Units became reality.
- Pre-load controlled Angular Contact Bearings are installed, so Rigidity can be kept high.
- Reasonable price has been achieved with reducing number of components, because oil seals have been eliminated by using shielded type Angular Contact Bearings.
- Angular Contact Bearings are made from stainless steel and low contamination Grease is applied, so Support Units can be used in clean-environment.
- Ultra-compact size (f3) is standardized, it would be suitable for Ultra Miniature Ball Screws.
- Pillow & Flange type are standardized for both fixed & supported side, so wide variety of choices are available.

●种类 / Variation

紧凑型支架组件(MSU系列)备有枕型和法兰型两种类型,可满足用户不同的安装状态。两种类型的固定侧、支撑侧组件均已实现标准化。枕型产品与以往产品相比,重量大幅度减轻,外形更紧凑。以往产品(块型)也在继续销售。

Compact Support Units (MSU series) provide 2 choices of Housing type, which are Pillow type and Flange type. Fixed side and supported side Units are standardized for each type. In case of Pillow type, it became light-weight & more compact compared to our conventional type. Our conventional models, which are Block type Support Units, are still available.

枕型 / Pillow type



法兰型 / Flange type



●规格 / Specifications

紧凑型支架组件(MSU系列)中安装的角接触球轴承使用不锈钢材质,封入有低起尘润滑脂。其他零件也采用不锈钢材质,或经过了发黑处理,也可应用于无尘环境。还可提供轴承钢(SUJ2)材质+封入了耐微动磨损润滑脂的产品,详情请向KSS咨询。

Angular Contact Bearings built in Compact Support Units (MSU series) are made from stainless steel and low contamination Grease is applied. Other components of Support Units are also made from stainless steel or are coated by black finishing. These series can be used in clean-environment.

[MSU系列使用的轴承 / Ball Bearings for MSU Series]

角接触球轴承 / Angular Contact Ball Bearings

用于紧凑型支架组件(MSU系列)固定侧的角接触球轴承。根据用户需求,以轴承单体(组装好的状态)的形式销售。(参照E115-E116页)



This series is the Angular Contact Ball Bearings built in fixed side of Compact Support Units (MSU series). This can be provided as a set of DF or DB configuration only. (Refer to dimension table in page E115-E116)

深沟球轴承 / Deep Groove Bearings

用于紧凑型支架组件(MSU系列)支撑侧的深沟球轴承。根据用户需求,以轴承单体的形式销售。(参照E117-E118页)



This series is the Deep Groove Ball Bearings built in supported side of Compact Support Units (MSU series). This type can be provided as a Bearing itself. (Refer to dimension table in page E117-E118)

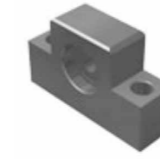
[EK、EF系列 / EK, EF Series]

固定侧
Fixed end

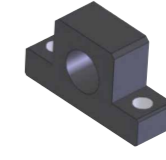


EK型 / EK type

支撑侧
Supported end



EF型 / EF type



SUP型 / SUP type

●特点

- 备有固定侧组件和支撑侧组件,固定侧组件中组装有角接触球轴承(已调整预压),通用性广;支撑侧组件中安装有深沟球轴承和止动环。
- 固定侧组件在两侧(单侧)内置有密封,因此在常规环境下无需采取特殊防尘措施。

●Features

- Multi-use Angular Contact Ball Bearings (with pre-load) are built in Fixed side Support Units, and Deep Groove Bearing is attached in supported side Unit with stop ring.
- Fixed-side Support Unit has seals at both end (or one end), so special dust protection is not necessary under normal circumstance.